



# SYNERGY<sup>®</sup>

SUB SEA ENGINEERING LLC

ISO 9001 : 2008 Certified Company



## COMPANY PROFILE

P.O. Box 48074 Dubai.  
United Arab Emirates  
Tel : +971 - 4 - 2672844  
Fax : +971 - 4 - 2672818

E-mail : [info@synergyuae.com](mailto:info@synergyuae.com)  
Website : [www.synergyuae.com](http://www.synergyuae.com)

## TABLE OF CONTENTS

Sections	Descriptions		Ref Page No
1	The Company		
	1.1	Introduction	3-4
	1.2	Activities and Services	5-8
	1.3	Assets: Diving Equipments	9-15
	1.4	Company Certifications	16-17
	1.5	QHSE Policies	18-22
	1.6	Vision & Mission Statement	23-24
	1.7	Organization Chart	25-26
2	Clients		27-28
3	Work Experience		
	3.1	Offshore	29-36
	3.2	Onshore and Civil	37-40
4	Location Map		41-42

## **Section 1.1: INTRODUCTION**

## 1.1. INTRODUCTION

**SYNERGY SUBSEA ENGINEERING LLC** serving the Oil & Gas industries, the Company was incorporated with the primary objective of providing all aspects of Underwater Diving Services, Specialized equipment, Allied Fabrications, Project Management, Marine Support, Consultancies etc., all under one roof.

The company is not simply an Underwater Diving Organization, but a group of underwater specialist, who can provide all aspects of Underwater Engineering and Project Management as well as the more routine diving services. Our main strengths are our flexibility and our ability to deliver projects safely, on time and to the best possible quality. Synergy offers a professional, prompt, efficient and competitive service. From seabed until the highest point of an offshore structure, from bottom to top, Synergy can offer a wide range of services to the Oil & Gas Industry.

The company maintains a motivated, creative and experienced team and a versatile range of compliant and fully certified diving equipment which can be configured to provide diving solutions for any worksite. Synergy has extensive working experience and track record in the offshore industry.

## **Section 1.2: ACTIVITIES AND SERVICES**



## 1.2 Activities and Services

With the support of experienced and well-known specialists, Synergy has the experience and ability to recognize and develop effective solutions to specific clients' need for a wide range of offshore support and engineering requirements.

### *Offshore Construction*

- Pre-Engineering Survey for the Installation and modification of existing Platforms and Jackets.
- Riser Clamps Installation.
- Riser Installation
- Conductor Clamp Installation.
- J tube and I tube installation.
- Subsea Flexible Pipes & Flow line's Installation.
- Subsea Spool Piece Installation.
- Barge Bumpers & Boat Landing Installation
- Riser Protectors installation
- As built and post construction Survey.
- Marine growth removal and inspection.



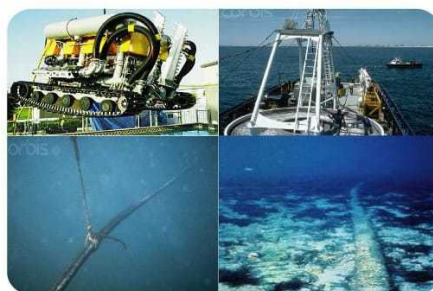
### *Subsea Pipeline works*

- Route survey for the pipeline.
- Free span Correction using underwater grouting system (Crossing's)
- Damage assessment & Clamp / Connector Installation.
- Decommissioning of Pipeline.
- Installation of Cathodic protection on Pipeline.
- Assist in Pipeline laying and Trenching work.



### *Submarine Fiber Optic Cable Laying*

- Route survey for the cable, and Near Shore protection.
- Shore End Cable Landing operations.
- Cable Laying, Trenching and Burial work.
- Mattress laying for near shore protection.
- Articulated (Split Pipe) installation.
- Cable Pinning operations.
- Pre & Post lay CCTV Survey.
- Cable Burial using U/W Trenching System.



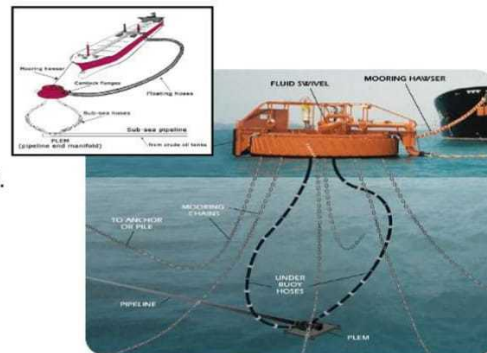
## *Underwater NDT Work*

- NDT work of the / FPSO / Floaters/ Semi submersible Rigs / SBM & SPM.
- In – Lieu of Dry Docking Survey of jack-Up Rigs for all Major Classification Societies like: ABS, DNV, Lloyds, BV, IRS.
- Underwater Visual Inspection of Rigs / Vessel Offshore Structures.
- Cathodic Protection Survey for the Offshore Platforms and Offshore Structures.
- Ultrasonic Thickness gauging for the offshore Platforms and Offshore structure.
- Magnetic particle Inspection (MPI) for the Welds on the Platforms / Jackets/ Jack-up Rigs, etc
- Flooded Member Detection.



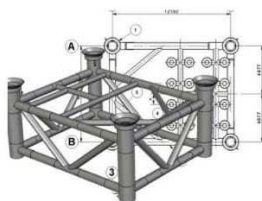
## *SBM and SPM*

- Installation of SBM & SPM.
- SBM / SPM Subsea Hose inspection and Changing if required.
- SBM / SPM Chains Inspections.
- Subsea PLEM Change out.
- MGR / NDT and Class Survey of the Buoy and Chains.



## *Onshore Underwater Vessel Inspection & Engineering work*

- Vessel / Barge Inspection for Propeller Clearing.
- Vessel / Barge Hull Cleaning & Propeller Polishing.
- Vessel / Barge Sea chest Cleaning and Video Recording.
- Under water Welding and Patching of any Damage to Vessel / Barge.
- Recovery of Fallen cargo.
- Class Survey of Vessel and Barge.





### ***Civil Construction Works***

- Underwater Block Placing for Break water / Jetty construction.
- Seabed Leveling and Underwater Grouting work.
- Underwater Geo Textile Installation.
- Underwater video recording.
- Underwater Control Blasting.
- Underwater Cutting and welding works.
- Third party inspection survey & reporting.



### ***Remotely Operated Vehicles (ROV)***

- Observation Class ROV's: Capable of conducting wide range of operations including Diver Support, Jacket Inspection, Environmental Sampling and Touchdown Monitoring.
- Light Work Class ROV's: Capable of conducting wide range of operations including Survey, Inspection, Environmental Sampling, Drill Support and Light Construction.
- Work Class ROV's: For operations in deep and ultra deep water depths. Undertake a wide variety of survey, construction and drilling support operations.
- ROV Supervisors, ROV Pilots and ROV Technician.



### ***Personnel's Supply***

Providing IMCA approved Personnel, Saturation Dive Superintendent / Supervisor,  
HSE / IMCA Part –II Divers (Sat Diver's), HSE / IMCA Part-I Divers (Air Divers),  
Dive Technician's (Electrical / Mechanical), Life support Supervisors / Technicians (LSS / LST),  
Field Engineer's.

### ***Diving Equipment Rentals***

- Complete Air and gas Dive system as per IMCA design.
- Underwater CCTV Units.
- NDT Equipments. (MPI Unit , CP meter, UT Meter)
- LARS. (Launch and Recovery System).
- Dive Decompression Chambers.
- Lift Bags.
- Any specialized Subsea equipments as per client requirements.
- Vessel Inspection equipments.





### **1.3: DIVING EQUIPMENTS [ASSETS]**

## MIX GAS & AIR DIVING SYSTEM

60" Twin Lock Decompression chamber. It consists of an Entry Lock, Main Lock And a medical lock. The entrance lock gives access to the Main lock for personnel, and the Medical lock is used to provide medicine and food etc to the personnel inside the main lock. There are two modes of communication from supervisor to diver / medic inside the chamber And vice versa. A chamber communicator on the chamber panel is connected to internal talk Back speakers in the main and entry locks. As backup, sound powered phones are also provided in case of power loss to the chamber.



## SCUBA REPLACEMENT WITH 2 DIVER PANEL AND DIVER COMMUNICATION

This panel is a 2 & 3 Diver HP/LP control panel, suitable for offshore use.

The panel is mounted with aluminum frame.

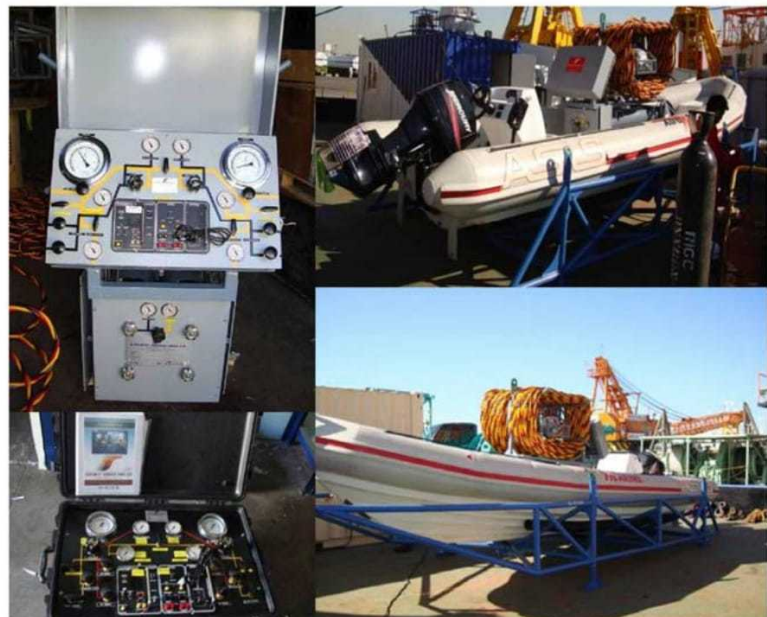
The panel pressure gauges are 62mm dia.

All the inlets and outlets are 3/8 & 1/4 swage lock, hard plumbed with ss tubing.

All LP valves are quarter turn ball valves and the HP valves are 1/4 inch needle valves.

The LP air supply has a max. Inlet working pressure of 15 bars (220 PSI) and the HP air supply has a max.

Inlet working pressure of 200bars



## DIVING LAUNCH & RECOVERY SYSTEM (LARS)

Specification:

- Mini Air basket deployment (2 diver)
- Robust painted steel skid
- Length = 3,170m
- Width = 2,100m
- Height = 2,380m / 3,620m (transport/deployed)
- 1,000 kg 70m main wire basket winch
- 650 kg 140m guide wire weight winch
- Twin hydraulic motor power pack with individual pumps per winch.
- Ascent rate of 18m/min
- Full certification pack to IMCA std



## AIR BANKS

Air filled tubes of pressure up to 3000 PSI. Used to supply high pressure air to dive control panel and low pressure air to DDC through high pressure regulator.





### UNDER WATER MUD LIFT

- Pump size: 1 inch - 25mm inlet & outlet
- Type: fresh water pump
- Capacity: 130 litres/min
- Suction head lift: 7 metres
- Total head lift: 35 meters
- Engine: new style gx25 4 stroke, unleaded



### DIVING BOAT

- Type: Outboard Motor
- Series: Four Stroke V Max SHO
- HP: 200
- Engine Type: V6 (60 degrees)
- Starting System: Electric
- Shaft Length: 20 in.
- Power Trim and Tilt: Yes
- Weight: 505 lb (229 kg)





## ZODIAC BOAT

Overall length : 3.70 (m) / 12'2" (f / i)

Width : 1.99 (m) / 6'6" (f / i)

Weight : 97 (Kg) / 214 (Lbs)

Passengers (max) : 6

Engine : 15/12 - 40/30 (Hp/Kw) Short Shaft



## LOW PRESSURE AIR COMPRESSOR

Heavy duty offshore pack container with lifting eyes, fork lift slots and covered bottom compressor and diesel has independent vibration absorption mounts.

Carbon monoxide (co) monitor with alarm, breathing air high temp alarm for 5120. Intake air cut off valve for diesel.

Dimensions: 96 " l x 55 " w x 48" h

Machine weight: 2750 lbs



### 350 CFM, 100-200 PSI ROTARY SCREW COMPRESSOR

The XA(H,V,T)S 300-375 DD6 range of portable air compressors from Atlas Copco is an innovative, state-of-the-art series of oil-injected rotary screw compressors, powered by reliable Deutz diesel engines. The modular design of these single axle units allows you to add many options to suit your needs and applications.

All compressors are manufactured in accordance with Atlas Copco's Quality and Environment Management System. This system complies fully with ISO 9001 and ISO 14001. All Atlas Copco compressors are tested to perform under the most demanding conditions.



### HIGH PRESSURE BREATHING AIR COMPRESSORS

#### DIESEL

##### Features

- 6000 PSI (414 Bar) Max Pressure
- Grade E Breathing Air Filtration
- Dual Filter Filtration (60,000 Cu. Ft.)
- Inter stage Pressure Gauges
- Low Oil Shut Down
- Automatic Condensate Drains
- High Temp Shut Down
- Hour Meter
- 2 Fill Whips
- Diesel Engine
- Stainless Steel Intercoolers
- Electric Start and 12 Volt Battery with Box
- Visual CO & Moisture Indicator
- Lifting Eyes and Fork Lift Slots
- Stainless Steel Frame
- Steel Frame
- Powder Coat Blue Paint
- Auto Pressure Shutdown
- Dial-A-Pressure Switch
- Audible and Visual CO and High Temp Alarm with Shutdown
- Filtration Upgradeable (90,000 Cu. Ft.)
- Certified Lifting Eyes
- Large Base Mount Fuel Tank
- Remote Fill Panel
- Yanmar Diesel, Hatz Diesel or Honda Gas



#### ELECTRIC

##### Breathing Air Compressor MARINER 320

With 320 l/min. the new MARINER 320 is the most powerful portable compressor worldwide. Maximum F.A.D. and little space requirement qualify the MARINER 320 to be the top choice for professional use. The extremely robust block and corrosion-resistant components allow smooth operation even under toughest climatical conditions.



## HYDRAULIC POWER PACK

### STANDARD FEATURES:

- Large, 16" diameter wheels for ease of transport over rough terrain and through yard gates.
- Large capacity hydraulic cooler to extend unit life and offer operator comfort. Cooling will meet or exceed HTMA specifications.
- Fuel level gauge
- Hour meter
- Low engine oil pressure shut-down
- Collapsible handle
- Electric Start.
- Operates type 1 and 2 class hydraulic tools.
- Capable of powering two tools simultaneously at 5 GPM each or one tool at 10 GPM



## UNDERWATER VIDEO SYSTEM



### Included with the System:

- ea. UWC-325/p, Fixed focus, Color Cameras.
- 2 ea. UWL-401, LED lights.
- 2 ea. C-2303, 500 ft. cables.
- CON-3200/D, Console with 12" Transflective Color LCD monitor,
- 2 independent power supplies inside,
- 250G Hard Drive, DVR "883", PIP device.
- New Smaller Console (4u High)

## **Section 1.4: COMPANY CERTIFICATIONS**



## 1.4. Company Certifications



## **Section 1.5: QHSE POLICIES**

## ❑ HEALTH & SAFETY POLICIES

Synergy Subsea Engineering LLC insists that no job is so important that it cannot be planned and executed in the best interests of “Health and Safety” and gives due consideration to the environment. Management’s objective at Synergy will be to provide sufficient resources, trained and experienced personnel, approved equipment and machinery and operating procedures, which meet the highest industry standards and are in compliance with current Local and International rules and regulations. H.S.E guidelines will be considered normal practice by the company. Fully supported by Senior Management, it is the duty of the line managers and supervisors to ensure strict compliance to its operating procedures and also to include those of its appointed subcontractors. All personnel employed by the company have a responsibility to conduct themselves and the company’s business in a safe and orderly manner, at all times, placing safety as the first priority, always with due consideration to the environment and for the benefit of fellow workers and the public in general.

Synergy Subsea Engineering LLC’ business culture is the understanding that a safe and healthy workforce builds business success. Our commitment to the safety, health and wellbeing of our employees and everyone affected by our undertakings, including contractors, visitors and neighbors is underpinned by the philosophy that no job is worth an injury and the belief that all injuries and work related diseases are preventable.

To implement this policy and maintain our commitment, we will:

- Establish and maintain a Safety and Health Management System with measurable objectives and targets.
- Provide and maintain safe workplaces, systems, plant and equipment.
- Provide supervision, information and training to ensure our people are safe at work.
- Apply work procedures and systems that identify hazards and assess and manage risks through elimination or other appropriate control measures.
- Assess and continuously review the safety management and safety performance of subcontractors’ and suppliers to ensure our employees are not exposed to unacceptable risks.
- Comply with all applicable laws, standards, regulations and best practices while aspiring to exceed these.
- Where practicable, apply the higher of our own standards, the customer’s standards or the appropriate legislated Health and Safety requirements.
- Report, investigate and share all incidents and near misses in order to maximize learning and prevent similar events in the future.

- Conduct regular audits, inspections, reviews and reports to measure compliance with this policy and our standards, and to inform continuous improvement.
- Foster a culture that encourages and rewards frank and fearless participation and consultation in the management of Safety and Health.

Synergy Subsea Engineering LLC recognizes that the success of this Safety and Health Policy relies on the total commitment and cooperation of management and staff – a unified approach. It is the responsibility of all individuals to achieve a safe and healthy workplace.

**“No job is worth an injury”**

## **❑ ENVIRONMENTAL POLICY**

Protections of the environment is integral to Synergy Subsea Engineering LLC’ business success. Our commitment to the responsible management of the environment is underpinned by the philosophy that our business activities should have the least possible effect on the environment and where possible should leave it better than when we found it.

To implement this policy and maintain our commitment, we will:

- Establish and maintain an Environmental Management System with measurable objectives and targets, and defined responsibilities and accountabilities.
- Develop environmental management plans prior to any activity that has the potential to negatively impact on the environment.
- Rigorously employ methodologies to identify environmental hazards, assess their risks and control the risks to ‘as low as reasonably practicable’.
- Develop and maintain environmental contingency response plans.
- Provide the resources, supervision, information and training to ensure our people can and do work in an environmentally responsible manner.
- Report and investigate all incidents and near misses in order to maximize learning and prevent similar occurrences in future.
- Achieve a level of environmental performance that goes beyond that required for legislative and regulatory compliance.
- Continually reduce our environmental footprint while delivering value for our employees, our clients and our shareholders.



- Foster a culture that encourages and rewards sound environmental practices and ongoing consultation on environmental management.

Synergy Subsea Engineering LLC recognizes that the success of this Environmental Policy relies on the total commitment and cooperation of management and staff – a unified approach.

**“Better than when we found it”**

## **□ QUALITY SYSTEM**

Consistent delivery of the highest quality integrated engineering services to the oil and gas, shipping, marine infrastructure and associated industries is Synergy Subsea Engineering LLC’s principle objective. Our commitment to quality and to delivering professional service and product to our customers is fundamental to our business success.

To implement this policy and maintain our commitment, management and staff will:

- Establish, document, implement and maintain a quality management system with measurable objectives and targets and continuously improve its effectiveness;
- Provide the infrastructure and resources needed for quality, including personnel and their education, training, skills and experience;
- Define and communicate quality responsibilities and authorities;
- Understand customer requirements prior to commencing any work;
- Develop and maintain integrated communication processes;
- Develop and continually review our quality objectives and the strategies that underpin them;
- Regularly audit and review the quality management system to ensure its ongoing suitability, adequacy, effectiveness and evolution;
- Meet or exceed customer needs and expectations whilst complying with all legal and contractual obligations; and
- Ensure quality issues and non-conformances are resolved, leading to continual improvement of our quality system and operating practices.

Synergy Subsea Engineering LLC recognizes that building value for its employees, customers and shareholders is underpinned by the quality of its products. This requires the total commitment and cooperation of

management and staff – a unified approach. It is the responsibility of all individuals to enhance our reputation as a customer focused company that consistently delivers the highest quality.

**“Better than expected”**

## **Section 1.6: VISION – MISSION STATEMENT**

## **1.6. VISION – MISSION STATEMENT**

### **1.6.1. Vision Statement**

To be one of the market leader in broad-based marine industry providing quality products and services, delivered by highly professional, passionate and motivated employees through innovative technologies.

### **1.6.2 Mission Statement**

We are committed and dedicated to build stakeholders value by developing and implementing innovative strategies, providing safe and cost-efficient quality based technical solution to meet customer's satisfaction.

### **1.6.3 Company Philosophy**

Q - Quality - Consistent Quality

R - Response - Responsiveness and Flexibility

D – Delivery - On time Delivery

T – Technology - Technology and Innovativeness

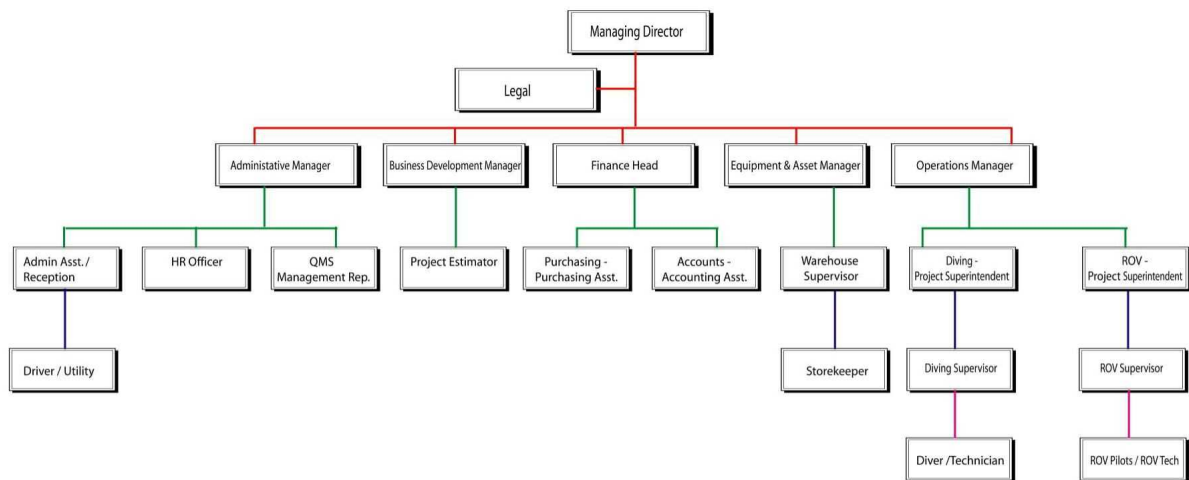
C – Cost - Competitive Pricing





## **Section 1.7 ORGANIZATION CHART**

## 1.7 Organization Chart



## **Section 2: CLIENTS**

## 2. CLIENTS

(SYNERGY SUBSEA ENGINEERING LLC, Dubai is a 100% Subsidiary of SEASWIFT ENGINEERING LLC Dubai, UAE)

Some of our client lists are the following...

- |  |
|--|
| <input type="checkbox"/> OIL AND NATURAL GAS CORPORATION LTD- INDIA  |
| <input type="checkbox"/> HINDUSTAN PETROULEM CORPORATION LTD – INDIA |
| <input type="checkbox"/> HARDY OIL LTD - INDIA                       |
| <input type="checkbox"/> CAIRN ENERGY INDIA LTD - INDIA              |
| <input type="checkbox"/> GREAT EASTERN SHIPPING COMPANY LTD - INDIA  |
| <input type="checkbox"/> MAZGAON DOCK LTD - INDIA                    |
| <input type="checkbox"/> JAGSON INTERNATIONAL LTD - INDIA            |
| <input type="checkbox"/> ABAN LOYD CHILES OFFSHORE LTD - INDIA       |
| <input type="checkbox"/> IRIAN OIL EXPLORATION COMPANY – IRAN        |
| <input type="checkbox"/> GAZPROM – RUSSIA                            |
| <input type="checkbox"/> BEKK SOLUTIONS- HONG KONG                   |
| <input type="checkbox"/> CAL DIVE INTERNATIONAL LTD - UAE            |
| <input type="checkbox"/> PROSAFE- SINGAPORE                          |
| <input type="checkbox"/> JET DRILLING PTE. LTD.– SINGAPORE           |
| <input type="checkbox"/> GLOBAL MARINE SYSTEMS LTD - UNITED KINGDOM  |
| <input type="checkbox"/> GULMAR OFFSHORE MIDDLE EAST LLC - UAE       |
| <input type="checkbox"/> DIVER MARINE DELTA- UAE                     |
| <input type="checkbox"/> E MARINE – UAE                              |
| <input type="checkbox"/> TYCO TELECOMMUNICATION-USA                  |
| <input type="checkbox"/> MARINE TECHNOLOGY – OMAN                    |
| <input type="checkbox"/> IMCC- GULF PIPING COMPANY- UAE              |
| <input type="checkbox"/> DRAGON OIL- UAE                             |
| <input type="checkbox"/> ROYAL HASKONING- UAE                        |
| <input type="checkbox"/> HILACO – UAE                                |
| <input type="checkbox"/> NAVIMAR- UAE                                |





**Section. 3**  
**WORK EXPERIENCE**  
**3.1 OFFSHORE**

### 3.1 OFFSHORE

DATE	CLIENT	VESSEL	LOCATION	JOB DESCRIPTION
FEB-98	MDL	GAL CONSTRUCTOR	SR PLTFRM B'BAY HIGH	REPLACEMENT OF CD PLATED BOLTS ON CONDUCTOR CLAMPS ON -7, -22, -39, -57 M.S.W
SEP-01	JAGSON INTERNATIONAL	DEEPSEA MATDRILL	B'BAY HIGH B SC 4A	PRE ENGG. SURVEY
OCT-01	HARDY EXPLORATION & PRODUCTION INC.	OCEAN GARNET	CY-OS/2 BLOCK	INSPECTION OF SUB-SEA WELL HEAD MEASUREMENT OF GUIDE POST AT -43 M.S.W
OCT-01	O.E.S.S.	MARINE- 500	KAKINADA	UNDERWATER CLEARING OF INTAKE GRILLS & STILL PHOTOGRAPHY AT -22 MS.W
NOV-01	JAGSON INTERNATIONAL LTD	DEEPSEA MATDRILL	B.BAY HIGH B SC 4A	CLAMPING OF BLOWDOWN / VENT PIPES & MEASUREMENTS OF THE WELL HEAD CASING WITH RESPECT TO MUDMAT AT -50 MSW
DEC-01	HARDY EXPLORATION & PRODUCTION INC.	OCEAN GARNET	CY-OS/2 BLOCK	MUDLIFTING OPS ON SUBSEA TR-A WELL HEAD & CCTV INSP AT -45 M.S.W
FEB-02	HARDY EXPLORATION & PRODUCTION INC.	OCEAN GARNET	CY-OS/2 BLOCK	MUDLIFTING OPS ON SUBSEA TR-A WELL HEAD & CLEANING OF FACE SEALS U/W CUTTING OF OLD GUIDE WIRE & DAMAGED POST AT -45 M.S.W
FEB-02	HARDY EXPLORATION & PRODUCTION INC.	DRILL SHIP BADRINATH	CY-OS/2 BLOCK	ESTABLISHING NEW GUIDE WIRES (4 NOS) & CCTV. AT -45 M.S.W

DATE	CLIENT	VESSEL	LOCATION	JOB DESCRIPTION
JUN-02	PGS SYSTEMS	AL JABER	OFF KAKINADA AMALAPURAM	IDENTIFICATION, MARKING AND RECOVERY OF LINE EQUIPMENT COMPROMISING OF BATTERY & CABLE RACKS.
SEP-02	GESCO	DRILL SHIP BADRINATH	GULF OF KUTCH	CLEARING OF FISHING NET FROM B.O.P DISCONNECTION OF HYD. HOSES AT -38 MSW
JAN-03	ABAN LOYD CHILES OFFSHORE LTD.	F.P.U TAHARA	PY-3 E. COAST	CLEARING OF FISHING NETS, BLANKING OF SEA CHEST & INSTALLATION OF NEW GRATING
JAN-03	NOTRANS PTE LTD.	PSO ENDEAVOR	PY-3 E. COAST	REMOVAL OF TANKER MOORING ROPE & INSTALLATION OF NEW ONE.
FEB-03	ABAN LOYD CHILES OFFSHORE LTD.	F.P.U TAHARA	PY-3 E. COAST	CLEARING OF FISHING NETS, BLANKING OF SEA CHEST & INSTALLATION OF NEW GRATING.PH-II
FEB-03	ABAN LOYD CHILES OFFSHORE LTD.	F.P.U TAHARA	PY-3 E. COAST	CLEARING OF FISHING NETS, BLANKING OF SEA CHEST & INSTALLATION OF NEW GRATING PHASE –III.
MAR-03	ABAN LOYD CHILES OFFSHORE LTD.	F.P.U TAHARA	PY-3 E. COAST	CLEARING OF FISHING NETS, BLANKING OF SEA CHEST & INSTALLATION OF NEW GRATING. PH –IV
APR-03	ABAN CONSTRUCTIONS LTD.		DAHEJ GUJARAT	U/W CUTTING OF KOREAN SHEET PILES APPROX 245 MTRS ( 3.5M * 70 NOS) LONG COMING IN THE PATH OF PIPELINE
APR-03	ABAN CONSTRUCTIONS LTD.		DAHEJ GUJARAT	ASSISTING WHILE LAYING THE PIPELINE. EFFLUENT DISCHARGE PIPE 4000 MTRS IN SEA FOR GIDC GUJARAT.
SEP-03	NOTRANS PTE LTD.	PSO ENDEAVOR	PY-3 E. COAST	REMOVAL OF TANKER MOORING ROPE & INSTALLATION OF NEW ONE.
JAN-04	ABAN LOYD CHILES OFFSHORE LTD.	ABAN II	P-B-S-6-1 PAK BAY	MUDLIFTING OPS & DAMAGE ASSESSMENT OF THE MUD MAT.



DATE	CLIENT	VESSEL	LOCATION	JOB DESCRIPTION
SEP-04	JAGSON INTERNATIONAL LTD	DEESEA MATDRILL	TAPTI OIL FIELD	MUDLIFTING OPS & MUD MAT INSPECTION. AT -30 MSW APPROX.
FEB-05	ABAN LOYD CHILES OFFSHORE LTD.	FPU TAHARA	PY-3 E. COAST	UWILD FOR ABS CLASS + SEACHEST BLANKING + CLEANING
MAR-05	CAIRN ENERGY INDIA PTY LTD.	PACIFIC WIZARD	GULF OF CAMBAY	ANCHOR RECOVERY
APR-05	ABAN LOYD CHILES OFFSHORE LTD.	ABAN II	KAKINADA	GENERAL MUDMAT INSPECTION & SURVEY.
APR-05	JAGSON INTERNATIONAL LTD	DEESEA MATDRIL	TAPTI FIELD	MUDMAT SURVEY AT 56 MSW.
MAY-05	ONGC	SAGAR RATNA	BOMBAY HIGH	UNDERWATER NDT INSPECTION IN LIEU OF DRY DOCK.
AUG-05	NOTRANS PTE LTD.	PSO ENDEAVOR	PY-3 E. COAST	CHANGE OF BACK UP ROPE, RENEWAL OF MAIN MOORING HAWSER, CONNECTION OF LOADING HOSE.(SBM JOB)
SEP-05	NOTRANS PTE LTD.	PSO ENDEAVOR	PY-3 E. COAST	CHANGING OF THE SBM HOSES
OCT-05	IOEC	JASCON 5	BOMBAY HIGH	PIPELINE LAYING & STRINGER INSPECTION WORK.
DEC-05	DIVER MARINE CONTRACTING UAE	BARGE	MUBARAK FIELD	RISER SPOOL INSTALLATION .
FEB-05	ABAN LOYD CHILES OFFSHORE LTD.	ABAN V	BOMBAY HIGH	U/W ILD FOR ABS CLASS.
APR-06	NOTRANS PTE LTD.	PSO ENDEAVOR	PY-3 E. COAST	CHANGE OF BACK UP ROPE, RENEWAL OF MAIN MOORING HAWSER, CONNECTION OF LOADING HOSE.(SBM JOB)
MAY-06	NOTRANS PTE LTD.	PSO ENDEAVOR	PY-3 E. COAST	LOADING HOSE CHANGEOUT BETWEEN FSO "ENDEAVOR" & NORMOR SUBMARINE BUOY AT PY-3 OIL FIELD.
JUN-06	JAGSON INTERNATIONAL LTD	DEESEA MATDRILL	B.BAY HIGH	INSPECTION OF MUDMAT AT 36 MSW AND NEW LOCATION SURVEY OF WELL C-37-E AT TAPTI FIELD.
NOV-06	BEKK SOLUTIONS	DIVING BARGE	JAMNAGAR	INSTALLATION OF 3 SPM.

DATE	CLIENT	VESSEL	LOCATION	JOB DESCRIPTION
SEPT-06	NOTRANS PTE LTD.	FSO ENDEAVOR	PY-3 E. COAST	SURVEY & VEDIOGRAPHY OF LEAKING HOSE.
DEC-06	NOTRANS PTE LTD.	FSO ENDEAVOR	PY-3 E. COAST	CHANGING OF BACKUP ROPE AT 75 MSW.
DEC-06	OAO GAZPROM	GALAXY DRILLER	EAST COAST	BOP LATCHING AT 100 MSW.
JAN-07	NOTRANS PTE LTD.	FSO ENDEAVOR	PY-3 E. COAST	SBM MAINTANCE & UWILD OF FSO ENDEAVOR
FEB-07	BEKK SOLUTIONS	DIVING BARGE	COCHIN WATERS	INSTALLATION OF SBM.
FEB 2007	NOTRANS MARITIME	FSO ENDEAVOR	PY-3,EAST COST	FSO ENDEAVOR'S UWILD FOR ABS CLASS
OCT 2007	NOTRANS MARITIME	FSO ENDEAVOR	PY-3,EAST COST	CHANGING OF BACK UP ROPE AND CHEST BLANKING
JAN2008	SAIPEM COMERCIO MARITIMO	PERRO NEGRO-3	KG-28 BASIN	NDT INSPECTION INCLUDING MAGNETIC PARTICLE INSPECTION AND GENERAL INSPECTION
13 TH FEB 2008	JAGSON INTERNATIONAL	DEEPSEA MATDRILL	WELL NO-GS-15- AO	VISUAL INSPECTION OF CHORD TO MUDMAT WELD ON ALL THE THREE LEGS
20 TH MARCH 2008	SAIPEM COMERCIO MARITIMO	PERRO NEGRO-3	HINDUSATN SHIPYARD LTD,VIZAG PORT	REMOVAL OF BLANKS AND CLEANING OF WATER JETTING NOZZLES ON COMPLETION OF JETTING PIPES REPLACEMENT IN THE SPUDCAN TANK
11 TH SEPT 2008	GREAT OFFSHORE	MALVIYA -16	YELLOW GATE- MUMBAI PORT	UNDERWATER REPAIRS
14 TH SEPT 2008	E MARINE	DP - 1151	DUBAI WATER FRONT - PALM JABEL ALI	BURIAL OF AUH-DXB & FOG RELOCATED CABLES AT DUBAI WATER FRONT.
12 <sup>TH</sup> OCT 2008	ATWOOD OCEANICS PACIFIC LTD	ATWOOD BEACON	OFF KAKINADA	VISUAL INSPECTION OF UNDER WATER AREAS OF LEGS
3 <sup>RD</sup> NOV 2008	SPEC INTL.	AOS CONSTRUCTOR	SOUTH PARS IRAN	SUPPORT SERVICES FOR SURFACE SUPPLY MIX GAS DIVING SERVICES

DATE	CLIENT	VESSEL	LOCATION	JOB DESCRIPTION
3 RD DEC 2008	OCS SERVICES/PROSAFE PRODUCTION	FSO ENDEAVOR	PY-3-OILFIED	REMOVAL OF EXISTING OLD VERMIER HAWSER & 12 BACK UP ROPE FROM CARRIER ARM ON NORMOR BUOY, INSTALLATION OF NEW VERMIER HAWSER & 12 POLYPROPYLENE BACK UP ROPE ON CARRIER ARM OF NORMOR BUOY
15TH MARCH 2009	E-MARINE	WASWL	QATAR	INSTALLATION OF ARTICULATED PIPE ON SUBSEA CABLE FOR PROTECTION
25TH MAY, 2009	TYCO TELECOMMUNICATION	CABLE SHIP TENEO	DJIBOUTI	UNDERWATER WORKS FOR CABLE LANDING, SPLIT PIPE INSTALLATION AND BURIAL WORK
SEPT-10	DCN GLOBAL		DAS ISLAND, ABU DHABI	BLOCK PLACING, UNDERWATER WELDING AND CUTTING WORK
DEC-09	ATHENA		FUJAIRAH	JETTY CONSTRUCTION WORKS
20 <sup>TH</sup> DEC, 2009	E-MARINE		UAE	SHORE END BURIAL OPERATIONS, IN FUJAIRAH
18 APRIL, 2010	TURKIMINISTAN OIL COMPANY	VESSEL CELINA	TURKIMINISTAN	SUBSEA AND ABOVE WATER SURVEY OF ZHDANOV 32 & 20 PLATFORMS
23 MAY, 2010	IOOC		IRAN	OPERATION FOR SUBSEA RETREIVAL OF PIPELINE AND VALVES WORK.
18 JULY, 2010	IOOC		IRAN	PROVISION OF DIVING PERSONNEL & BREATHING GASES FOR SURFACE SUPPLIED MIX GAS DIVING
OCT- 10	DCN GLOBAL		DAS ISLAND, ABU DHABI	BLOCK PLACING, UNDERWATER WELDING AND CUTTING WORK
DEC- 10	DCN GLOBAL		DAS ISLAND, ABU DHABI	BLOCK PLACING, UNDERWATER WELDING AND CUTTING WORK
09 JANUARY, 2011	IMCC	DELBA III	UAE	PROVISION OF DIVING SERVICES & SUPPORTING EQUIPMENTS FOR CHANGING THRUSTERS OF THE RIG.

DATE	CLIENT	VESSEL	LOCATION	JOB DESCRIPTION
JAN-11	DCN GLOBAL		DAS ISLAND, ABU DHABI	BLOCK PLACING, UNDERWATER WELDING AND CUTTING WORK
15 JANUARY, 2011	MARINE TECHNOLOGY - PDO	BARGE OCEAN 5	OMAN	SBM CHANGE- OUT OPERATION FOR PDO
02 APRIL, 2011	IMCC	DELBA III	UAE	CHANGING OUT OF DP THRUSTER FOR DELBA III IN FLOATING CONDITION.
15 APRIL, 2011	ROYAL HASKONING		UAE	UNDERWATER PILE INSPECTIONS OF MARINE GROWTH MEASUREMENTS, CLEANING AND UNDERWATER NDT.
02 MAY, 2011	E MARINE	CS ETISALAT	UMM AL NARR ABU DHABI, UAE	CABLE LAYING AND SHORE END LANDING ASSISTANCE
MAY-11	DCN GLOBAL		DAS ISLAND, ABU DHABI	BLOCK PLACING AND CIVIL CONSTRUCTION WORK
12 JULY 2011	E MARINE	CS NIWA	JEDAH	CABLE LAYING AND SHORE END LANDING OPERATION
19 JULY 2011	E MARINE	CS NIWA	SUDAN	CABLE LAYING, SHORE END LANDING USING ARTICULATED PIPES OPERATION



### 3.2 ONSHORE & CIVIL CONSTRUCTIONS

DATE	CLIENT	LOCATION	JOB DESCRIPTION
Feb-97	SHONAN ENGG.	PUNE	BLANKING OF 900 MM DIA PIPELINE MAIN SUPPLY LINE TO PUNE FOR INTERNAL REPAIRS.
Apr-97	PUNE MUNICIPAL CORP.	PUNE	U/W CUTTING OF THE BLANK FLANGE OF THE NEW FRESH WATER PIPELINE ERECTED (900 MM )
Jul-97	COASTAL MARINE	DAHANU	ROCK SAMPLING & SEA BED SURVEY FOR P& O PORTS
Jun-97	ELBEE AIRLINES	OFF MADH ISLANDS	SEARCH & RESCUE OPERATIONS FOR FOCKER PLANE CRASHED OF MADH ISLANDS
Aug-97	M.I.D.C. MAHAD	SAVITRI RIVER	U/W INSPECTION & PHOTOGRAPHY OF THE EFFLUENT DISCHARGE PIPELINE & DAMAGE ASSESSMENT.
Oct-97	M.I.D.C ROHA	ROHA GOFAN	INSTALLATION OF 22 MTRS LONG DIFFUSER (HDPE 900 MM EFFLUENT DISCHARGE PIPELINE) U/W VIDEOGRAPHY OF THE SAME AT THE RIVER MOUTH REVDANDA.
Mar-98	COMACOE	SIKKA JAMNAGAR	U/W PILE INSPECTION & CCTV WITH RECORDING.
Apr-98	C.C.L	NAVAL DOCK MUMBAI	U/W SEA BED INSPECTION, DESILTING, BED LEVELING SHUTTERING & U/W CONCRETING.( ONE SEGMENT SOUTH BLOCK)
May-98	C.C.L	KODASALLI DAM	U/W INSPECTION OF SLUICE GATES, GROUTING, LEAK STOPPING FROM THE SLUICE GATES.
Jun-98	ENRON	GUHAGHAR	U/W CCTV & INSPECTION OF THE PLEM.
Jul-98	S.N GHARPURE	PAWANA DAM	JACKWELL CCTV SURVEY & MUDLIFTING OPS
Aug-98	GESCO	KANDLA	LOCATING, RETRIEVAL & RELAYING OF GRAVITY ANCHORS (80 TONS EACH) X 16NOS. REALYING OF THE COMPLETE MOORING SYSTEM OF H.P.C.L. VIRTUAL JETTY.
Jan-99	H.P.C.L	KANDLA	INSTALLATION OF PENANT MARKER BUOY (6 NOS) INSTALLATION OF STRAPS BETWEEN THE GRAVITY ANCHORS (3 nos) INSTALLATION OF CHAIN SUPPORT BOUYS (2 NOS)
Apr-99	SAWAY SALVAGE	MINICOY ISLANDS	SALVAGE OF PRECIOUS CARGO.

DATE	CLIENT	LOCATION	JOB DESCRIPTION
Dec-99	BHAGHEERATHA ENGG. LTD.	BASSEIN CREEK	U/W RECTIFICATION TO STOP LEAKAGE
Dec-99	GLOBAL MARINE SYSTEMS U.K.	BACK BAY MUMBAI.	LAYING BURIAL OF SEA-ME-WE3 FIBRE OPTIC CABLES SYSTEM FOR VSNL.
Apr-01	GLOBAL MARINE SYSTEMS U.K.	BACK BAY MUMBAI.	THE PROJECT INVOLVED PLACING 3M*2M*150M MATTRESSES WEIGHING 1.572 TONNES EACH, IN NIL VIZ THE DISTANCE COVERED BY FLEXIBLE CONCRETE MATTRESSES WAS 580 METRES.
Apr-03	HINDUSTAN CONST. CO.	BANDRA RECLMTN	SALAVAGE OPERATIONS OF 8 NOS SHEET PILES WEIGHING APPROX. 18 TONS EACH 21 MTRS LONG IN TURBID CONDITIONS
Apr-03	ABAN CONSTRUCTIONS LTD.	DAHEJ GUJARAT	U/W CUTTING OF KOREAN SHEET PILES APPROX 245 MTRS (3.5M * 70 NOS) LONG COMING IN THE PATH OF PIPELINE
Apr-03	ABAN CONSTRUCTIONS LTD.	DAHEJ GUJARAT	ASSISTING WHILE LAYING THE PIPELINE. EFFLUENT DISCHARGE PIPE 4000 MTRS IN SEA FOR GIDC GUJARAT.
Jun-03	OCEAN PRIMA SHIPPING & MNGMNT PVT LTD	KANDLA PORT	4 TEAMS FOR THE RETRIEVAL OF SUNKEN LOGS WEIGHING APPROX 7 TONS EACH (700 LOGS)
Sep-03	HINDUSTAN CONST. CO.	BANDRA RECLMTN	MARKING OF VSNL CABLES APPROX LENGTH 120 MTRS EACH CABLE. (3 CABLES) USING WIRE ROPES & FLUOROSCENT 24" DIA MARKER BUOY WITH SWIVEL AT 10 MTRS INTERVALS EACH CABLE.
Oct-03	MULSHI SPRINGS	OFF LONAVALA	SITE INSPECTION FOR NATURAL WATER SPRINGS
Oct-03	HINDUSTAN CONST. CO.	BANDRA RECLMTN	U/W CUTTING OF THE TEST PILE P-28, AND BREAKING OF CONCRETE USING PNEUMATIC HAMMERS AND CUTTING OF REINFORCEMENTS UPTO THE SEA BED.
Nov-03	HINDUSTAN CONST. CO.	BANDRA RECLMTN	REMOVAL OF ROLLERS FROM THE SPUD BARGE CLEARING OF PROPELLER OF TUG "VIJAY" SEARCHING OF DRILL BITS.

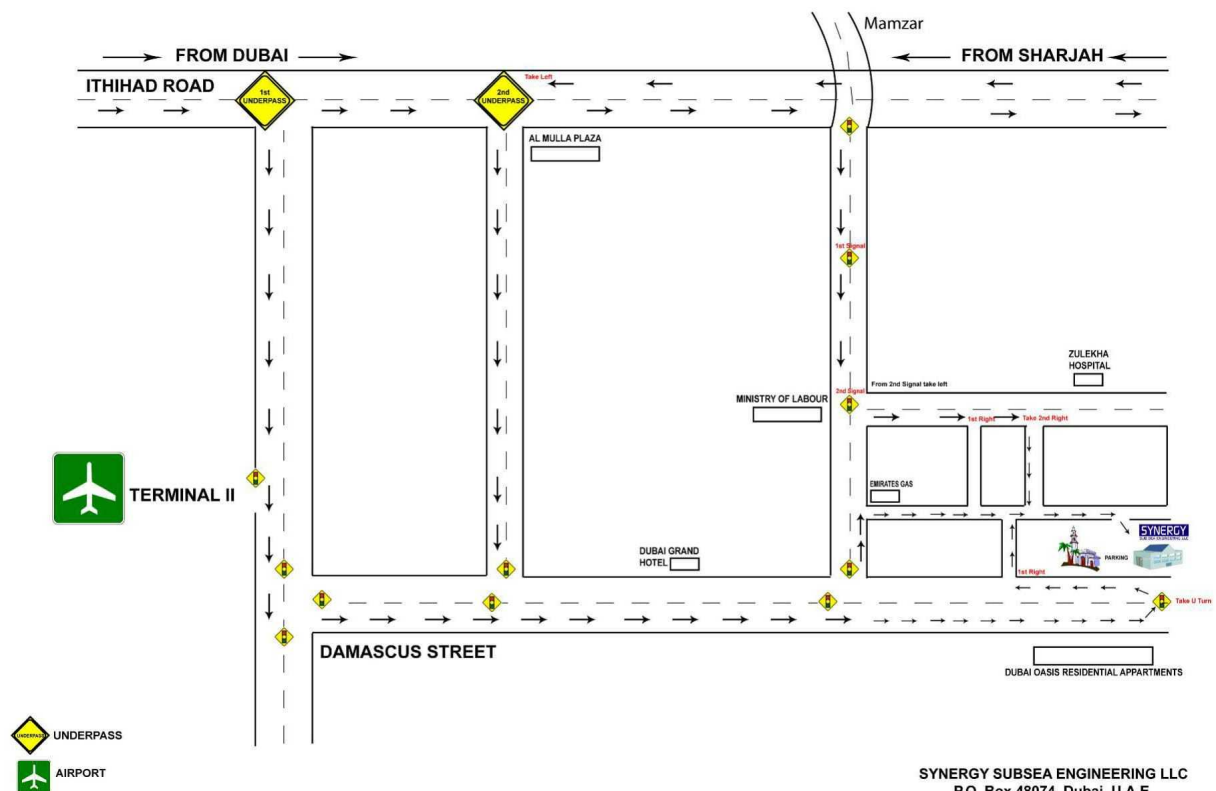
DATE	CLIENT	LOCATION	JOB DESCRIPTION
Dec-03	HINDUSTAN CONST. CO.	BANDRA RECLMTN	ASSISTING IN SHIFTING OF JACK UP RIG NEAR THE VSNL CABLES.
Jan-04	HINDUSTAN CONST. CO.	BANDRA RECLMTN	MARKING OF VSNL CABLE AT THREE POINTS ON THE SEA-ME-WE 3.
Feb-04	HINDUSTAN CONST. CO.	BANDRA RECLMTN	MARKING OF VSNL CABLE TWO BUOYS EACH ON J & K CABLE.
Feb-04	HINDUSTAN CONST. CO.	BANDRA RECLMTN	DESILTING IN THE COFFER DAM, SAND FILLING & CONCRETING IN THE COFFERDAM. 4 TEAMS WORKING IN 12 HRS SHIFTS.
Apr-04	HINDUSTAN CONST. CO.	BANDRA RECLMTN	SEARCHING. MARKING, DESILTING & RECOVERY OF THE JACK UP RIG ANCHOR.
Mar-04	L&T ECC	DAHEJ GIDC	DIVING CARRIED OUT AT THE DIFFUSER POINT TO OPERATE THE DIFFUSER VALVE 24 VALVES AT -30 MSW
Apr-04	BLUEFIN MARINE IND.	DAHEJ GIDC	UNDERWATER CUTTING OF THE SHEET PILES BELOW THE PIPELINE.
Jun-04	L&T ECC	DAHEJ GIDC	DIVING CARRIED OUT AT THE DIFFUSER POINT TO OPEN THE DIFFUSER VALVE 24 VALVES AT -30 MSW
Sep-04	HINDUSTAN CONST. CO.	BANDRA RECLMTN	MARKING OF VSNL CABLES APPROX LENGTH 120 MTRS EACH CABLE. (3 CABLES) USING WIRE ROPES & FLUOROSCENT 24" DIA MARKER BUOY WITH SWIVEL AT 10 MTRS INTERVALS EACH CABLE.
Oct-04	L&T ECC	DAHEJ GIDC	DIVING CARRIED OUT AT THE DIFFUSER POINT TO OPERATE THE DIFFUSER VALVE 24 VALVES AT -30 MSW
Oct-04	HINDUSTAN CONST. CO.	BANDRA RECLMTN	SALAVAGE OPERATIONS OF 13 NOS SHEET PILES WEIGHING APPROX 18 TONS EACH 19 MTRS LONG AT THE SEA SIDE AREA IN TURBID CONDITIONS

DATE	CLIENT	LOCATION	JOB DESCRIPTION
Nov-04	HALANI SHIPPING	MBPT C SHED	SALVAGE OPERATIONS OF LOCATING AND RETRIEVAL OF H BEAM OF 16 MTRS LENGTH WEIGHING 200 TONS
Jan-05	HINDUSTAN CONST. CO.	BANDRA RECLMTN	UNDERWATER BED LEVELING, DESILTING AND CONCRETING WORKS.
Feb-05	L&T ECC	DAHEJ GIDC	DIVING CARRIED OUT AT THE DIFFUSER POINT TO OPERATE THE DIFFUSER VALVE 20 VALVES AT -30 MSW
Jul-05	SVASEK HYDRAULICS	HAZIRA SURAT	RETRIVEL OF THE CURRENT METER AT 20 MSW.
Oct- 09	ATHENA	FUJAIRAH	PROVISION OF UNDER WATER WET WELDERS TEAM FOR THE UNDERWATER WELDING WORKS
Dec-09	ATHENA	FUJAIRAH	UNDERWATER CORE LOC FIXING & UNDERWATER ARMOURING FOR BREAK WATER SYSTEM
Jul- 10	JE JACOBS	ABU DHABI	UNDERWATER INSPECTION FOR A SUBMERGED ROCK SILL AND LOCATING REGIONS WHERE SILT MATERIAL EXISTS ALONG THE BEACH. THE AREA OF CONCERN COVERED 625M BY 120M.
Sept-10	DCN GLOBAL	DAS ISLAND, ABU DHABI	DIVING SERVICES ASSISTANCE: PROVISION OF DIVE TEAM WITH QUALIFIED IMCA CERTIFIED SUPERVISORS AND DIVERS.
Oct- 10	DCN GLOBAL	DAS ISLAND, ABU DHABI	DIVING SERVICES ASSISTANCE: PROVISION OF DIVE TEAM WITH QUALIFIED IMCA CERTIFIED SUPERVISORS AND DIVERS.
Dec- 10	DCN GLOBAL	DAS ISLAND, ABU DHABI	DIVING SERVICES ASSISTANCE: PROVISION OF DIVE TEAM WITH QUALIFIED IMCA CERTIFIED SUPERVISORS AND DIVERS.
Dec-10	HILACO	ABU DHABI	THE SPECIFIED SCOPE OF WORK COMPRISED OF UNDERWATER PHOTOGRAPHY OF 750 METERS OF EDGE PROTECTION WORKS (ARMOUR ROCKS) AT SAADIYAT ISLAND, ABU DHABI, UAE.
Jan-11	DCN GLOBAL	DAS ISLAND, ABU DHABI	DIVING SERVICES ASSISTANCE: PROVISION OF DIVE TEAM WITH QUALIFIED IMCA CERTIFIED SUPERVISORS AND DIVERS.
May-11	DCN GLOBAL	DAS ISLAND, ABU DHABI	DIVING SERVICES ASSISTANCE: PROVISION OF DIVE TEAM WITH QUALIFIED IMCA CERTIFIED SUPERVISORS AND DIVERS.



#### **4. LOCATION MAP OF DUBAI OFFICE**

#### 4. LOCATION MAP OF DUBAI OFFICE



**SYNERGY SUBSEA ENGINEERING LLC**  
P.O. Box 48074, Dubai, U.A.E.  
Office : +9714 2672844 Fax : +9714 2672818